

## Challenge

Rescue two words from the flower bed and write two sentences with them.



Level 5

---

---

---

---

---

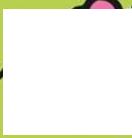
---

---



are saying /yoo/

# The Venue



Let's practise Sam's Sounds and Sight Words!



ing

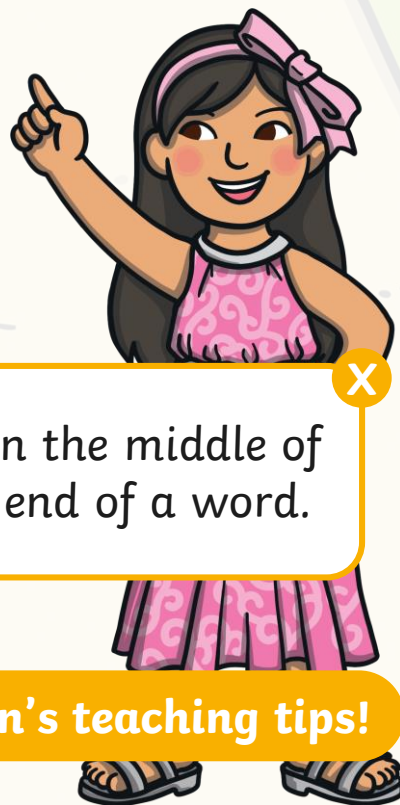


theardie

hed



Today, we are learning to read words that contain **ue**  
saying /yoo/.



**ue** can be found in the middle of  
a word or at the end of a word.



Click me for Ben's teaching tips!



Let's practise reading some of this week's focus words that contain **ue** saying /yoo/.



due

venue

fuel

argue

Watch the magic pencil write the words. Can you join in?



Teach

drive

Play



Teach

venue

Play





Teach

fuel

Play



Teach

argue

Play





As Mum drove through the open gates, Ben and Sam stared out of the car window. There was a huge statue standing at the side of the long driveway. "I wonder who he was?" Sam asked Ben.



Ben replied, "I have no idea! Maybe it is Sue's new husband."  
Everyone laughed!  
Dad turned to Mum, "Is this the right venue? There does not seem to be many people here."





“We have arrived a little early. I thought it would have taken us longer to get here. People are due to arrive around eight o’clock,” replied Mum. She continued, “We could always visit the gardens first before we see Sue and her husband Mike.”



# Statues in the Garden

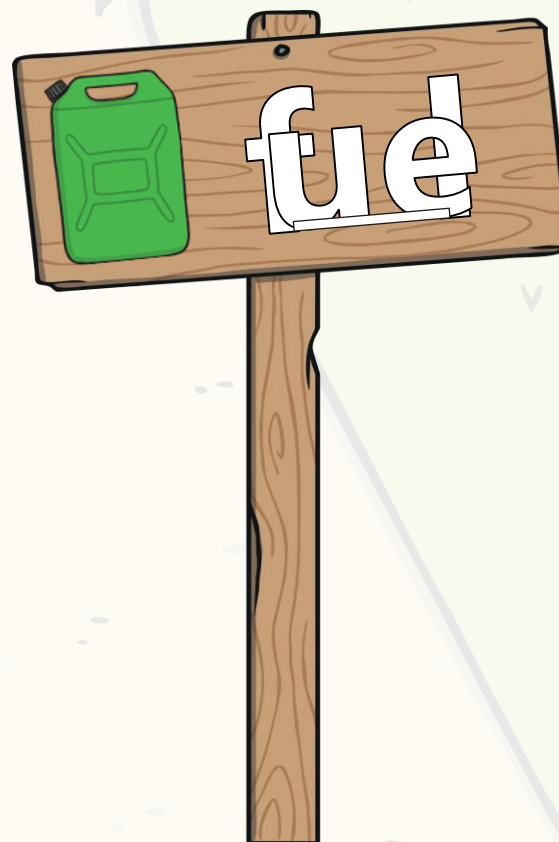
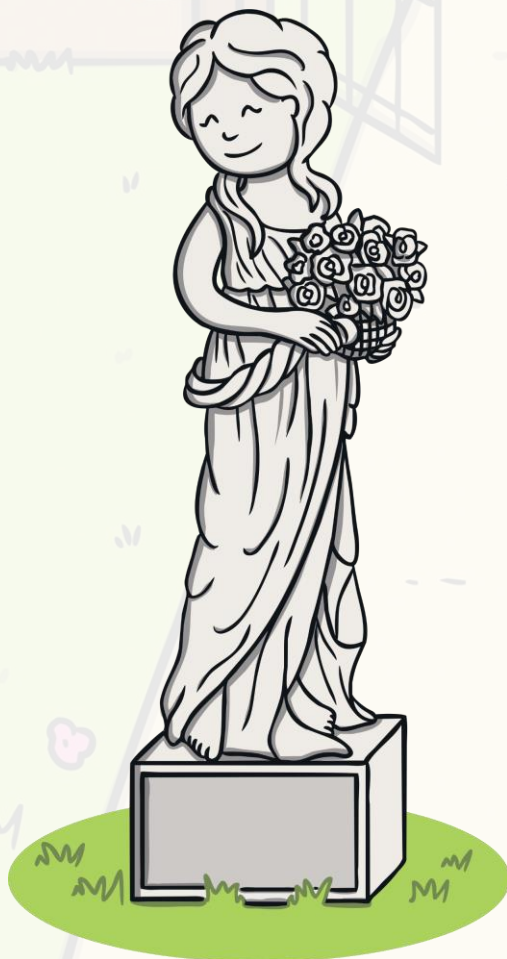
Mum parked the car and the family explore the hotel gardens. There are lots of very old statues in the garden. Can you work out what they say? Some of the letters are missing. Write down your answers.



They are all **ue** words.

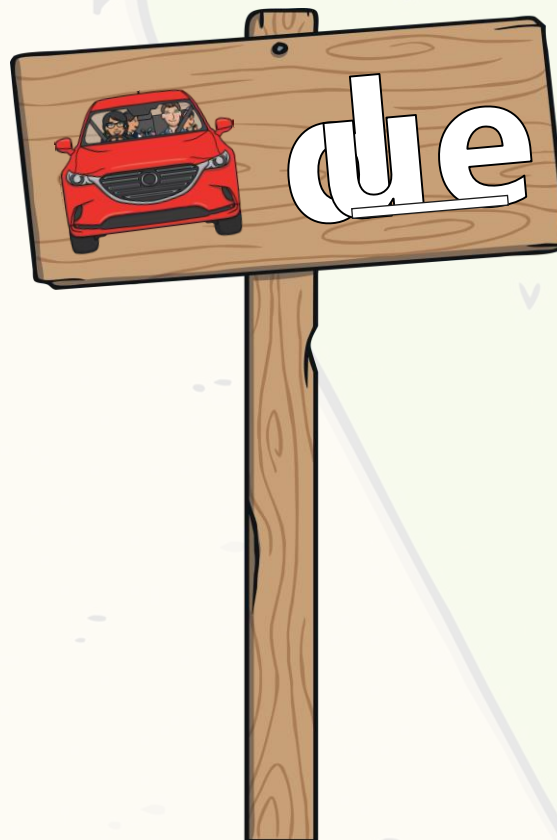


**Hint**



Show





Show





Show



# Sundial Word Spin

Ben and Sam notice a sundial in the hotel garden. Click on the button to see which **ue** word is in the shade. Unfortunately, the letters are jumbled up!  
Write down each word.



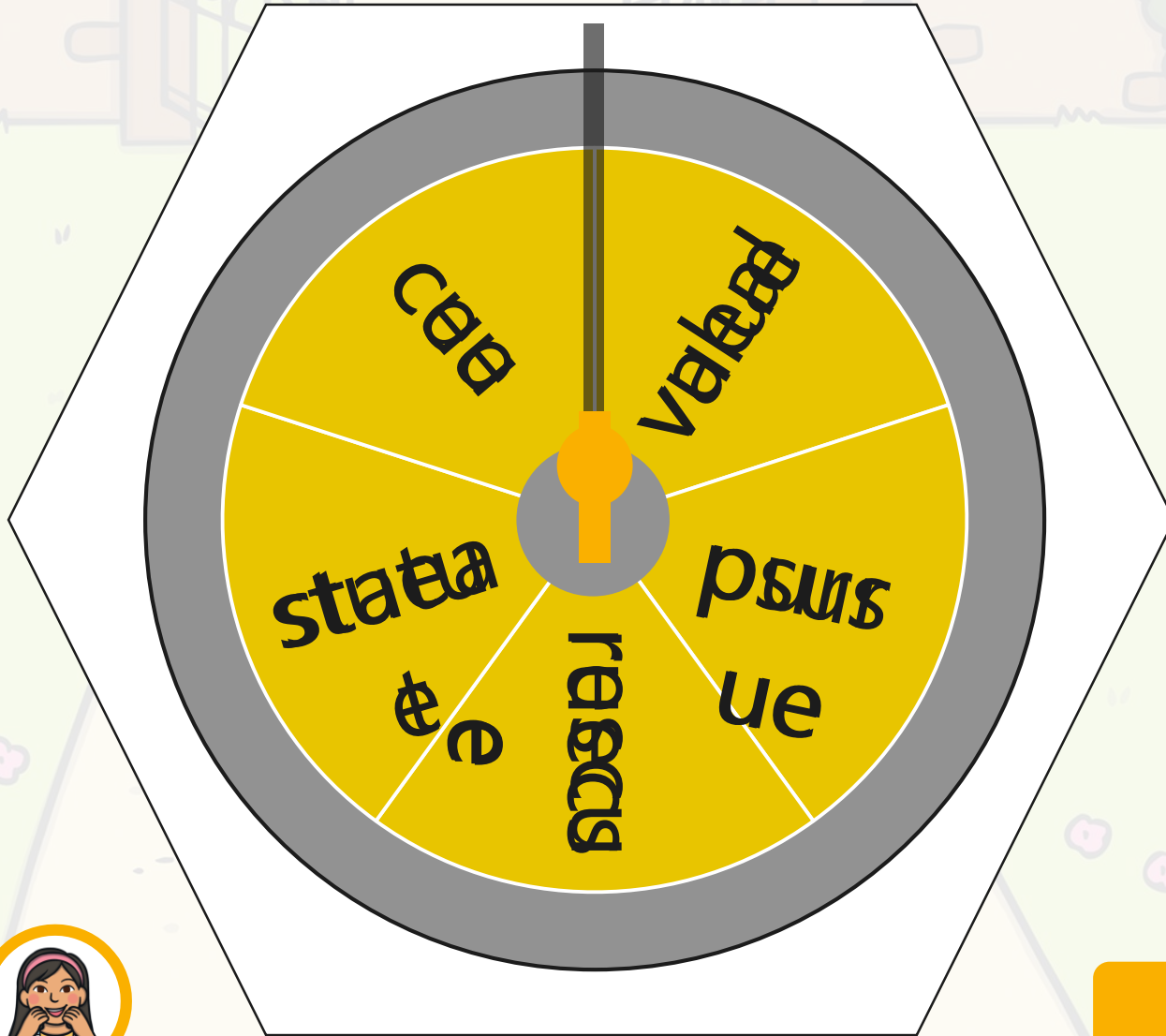
The first letter of each jumbled word is the actual first letter of the word.



Click me for Ben's teaching tips!



Practise



Show



Spin



“I’m coming to rescue you two from that big statue!” joked Mum.  
“Rescue us?” Ben and Sam laughed.  
“It is time to go into the hotel because many more people have arrived,” said Dad.



“Dad, this garden is so beautiful!” Sam said, looking at the flowers. Dad nodded.

Mum added, “Maybe you will get a chance to come back out here later, but now we are due to be inside.”



# Sentence Time

What was Sam thinking to herself?  
Read the sentence then click 'Show' to reveal the answer!





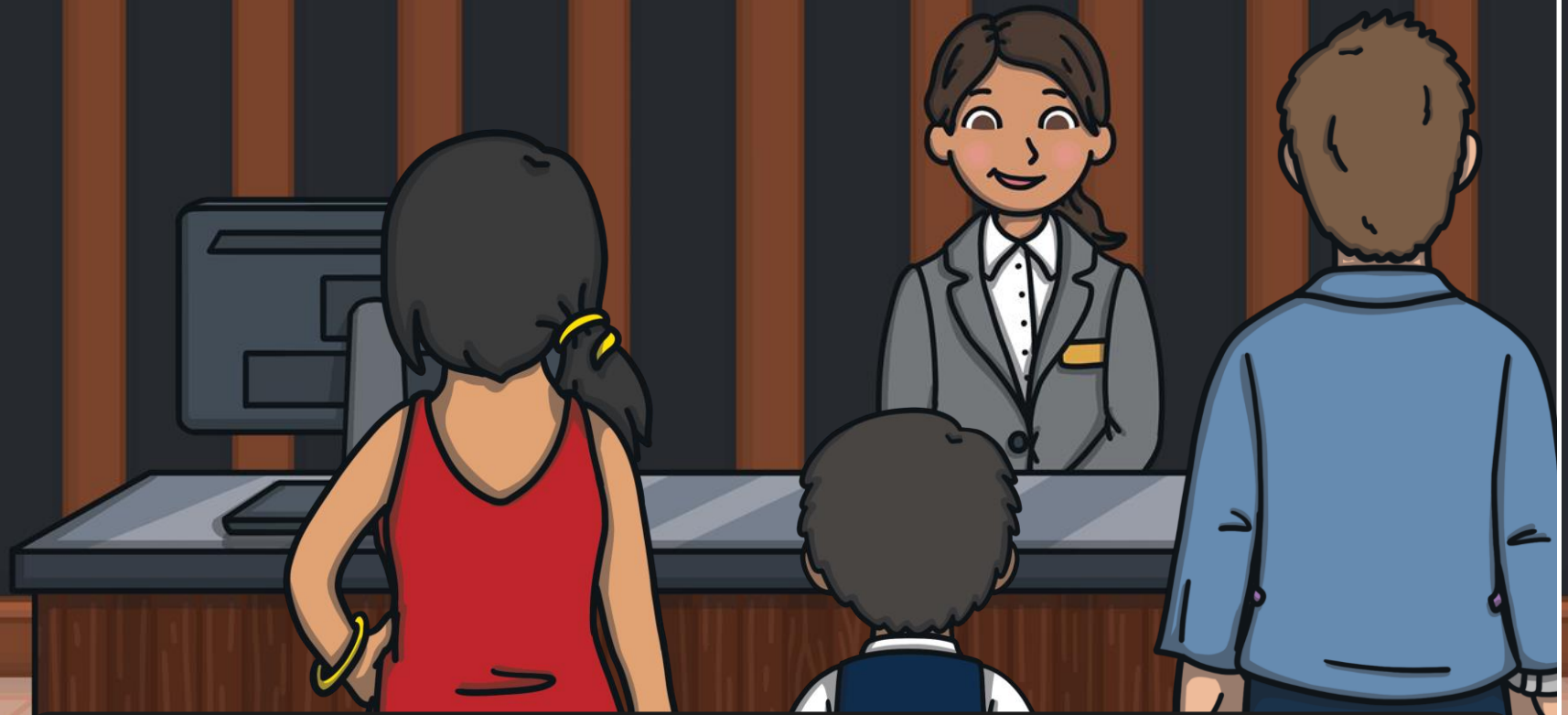
I have never seen so many  
statues!

Sound Buttons On/Off

Show

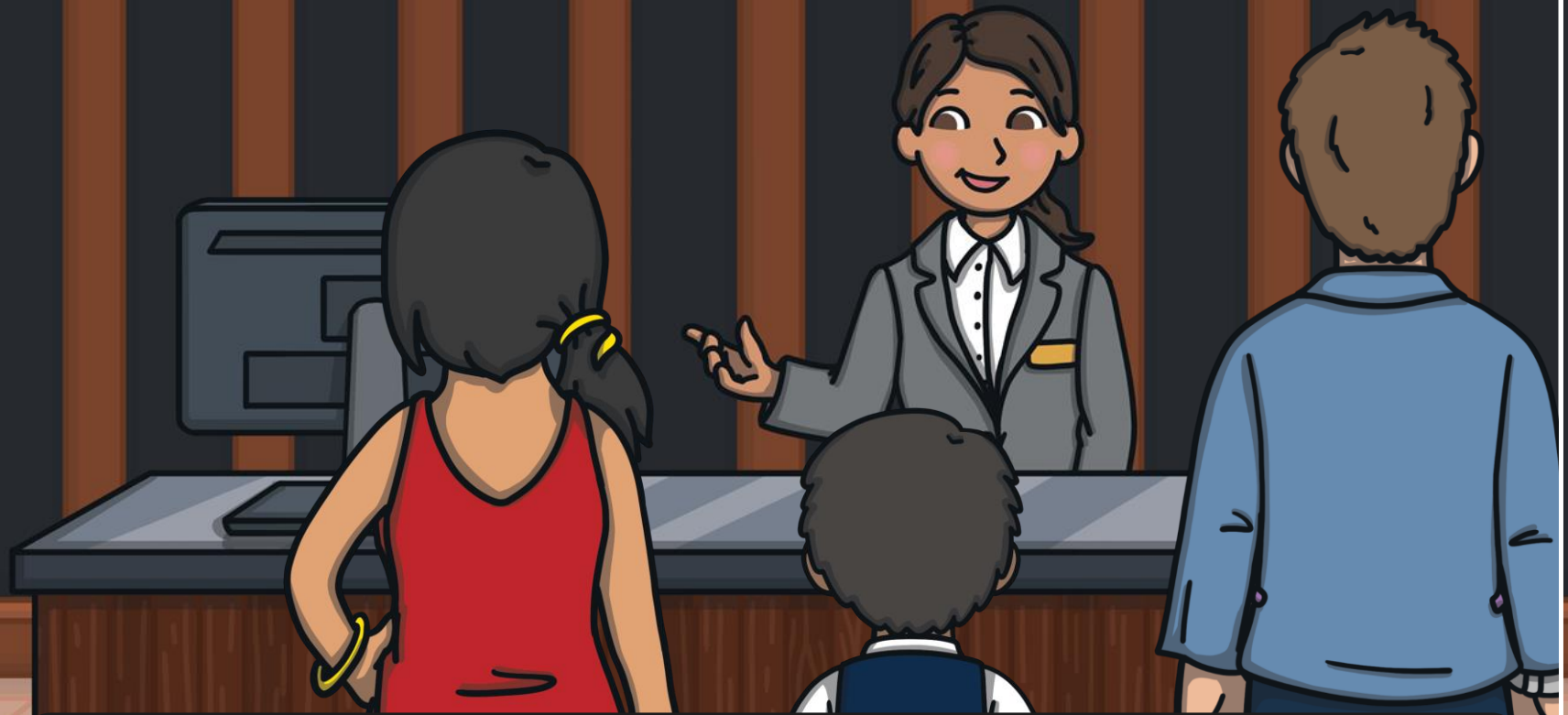






The family entered the hotel and were greeted by a friendly receptionist. "Welcome! Are you here for the wedding of Mr and Mrs Uba?"

"Yes," Mum replied. "Where do we need to go?"

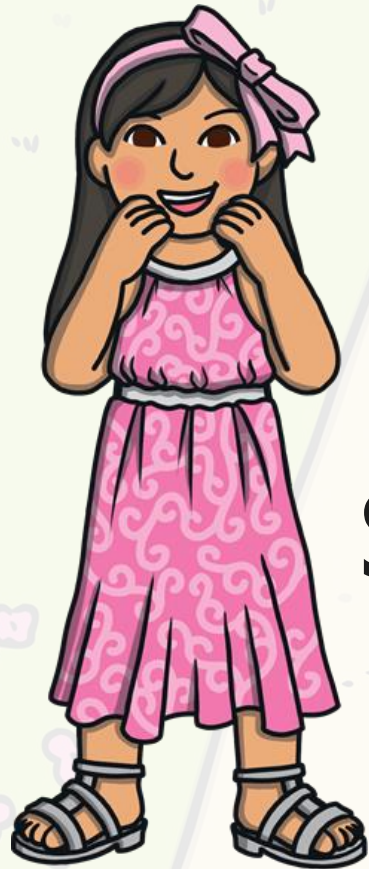


She responded, “Follow the signs for the Hampton Room. It is just around this corner and on your left.”

“Thank you!” replied Mum and Dad together.

“Time to party!” replied Ben. Everyone laughed!

**Today, we have learnt...**

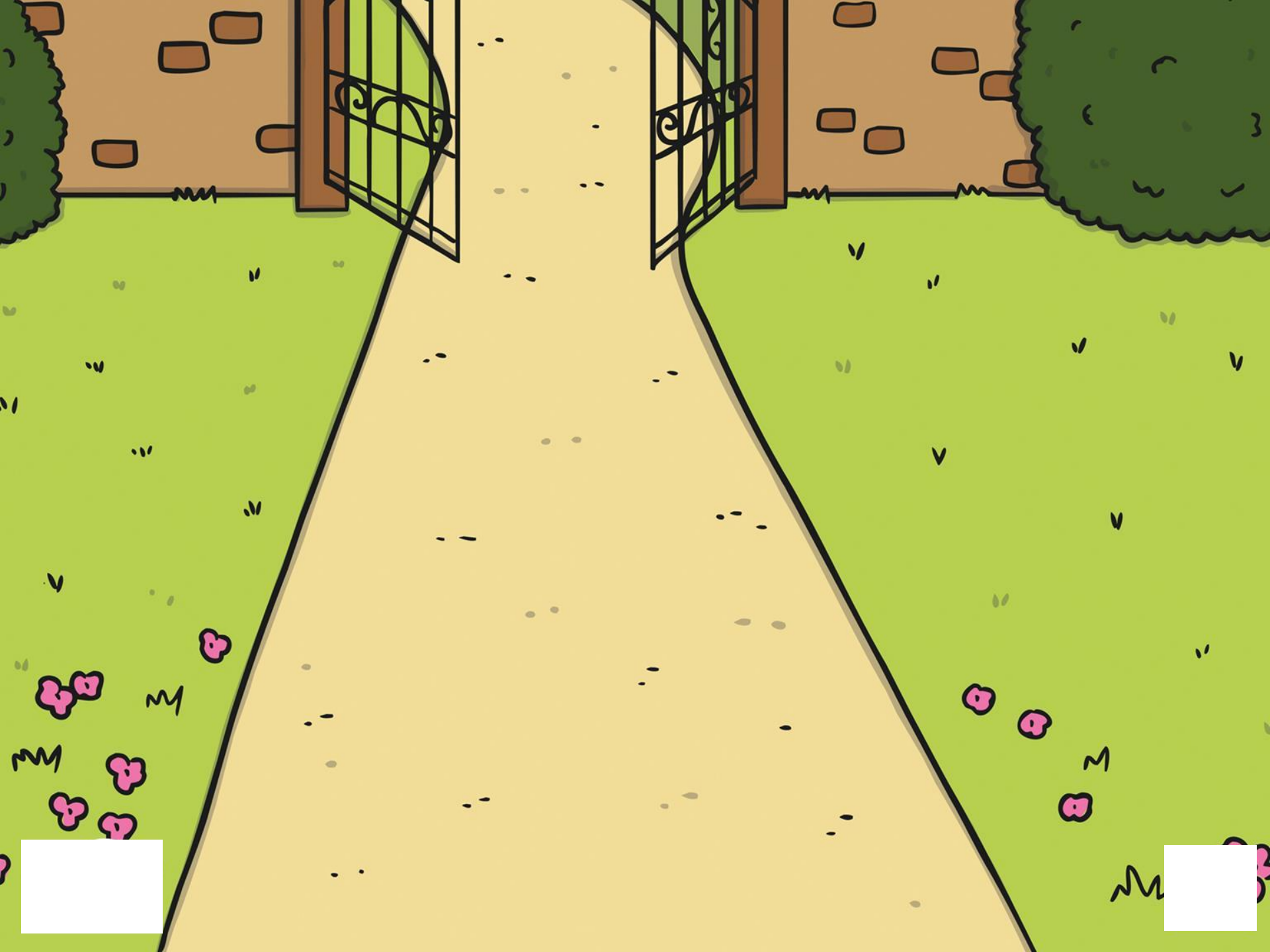


**ue**

**saying /yoo/**



The adventure continues next lesson!



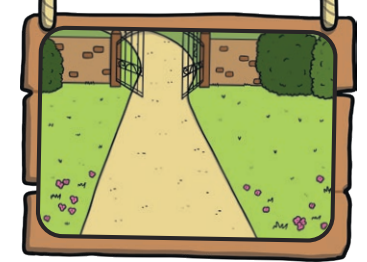
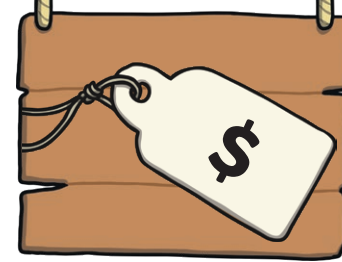
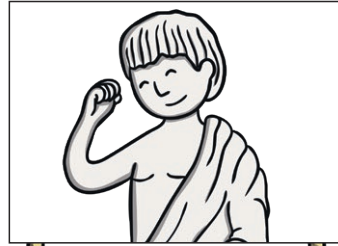
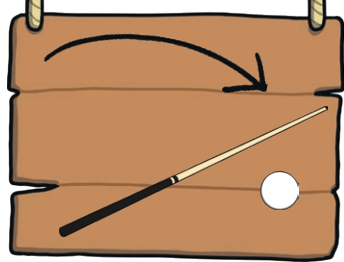


# Statue Words and Pictures



Level 5

Read the **ue** words that are in the flowerbed and match them to the correct picture on the statues. Write the matching word under the statue.



venue

cue

rescue

value